

# TDM-BII



### Main Features

### Thermal Recording Using Heat Sensitive Chart

No Synchronization Error

### Low Power Consumption

6 Hours Continuous Operation with Built-in Battery. Car battery can also be used.

### Automatic Printing on Chart

Prints the time, depth, recording scale, correction for sound velocity

### Clock Function

Can print and output time at preset intervals

### Lightweight and Compact

Only 7Kg with Built-in Battery

### Automatic/Manual Shifts

Option of Shifting Ranges Automatically

### Correction for Sound Velocity

Automatic correction is possible if sound velocity correction value is entered.

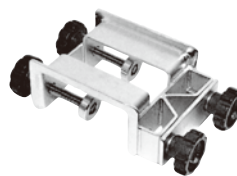
### TDM-BII Specifications

Recording Scales	1/100, 1/200; Optional: 1/50
Measuring Ranges	Analog: 0.65 – 100m (when bottom is flat) Digital: 1.00 – 100m (when bottom is flat)
Accuracy	±2cm ± water depth x 1/1000
Recording Chart	Heat-sensitive (thermal type) chart; width 112mm x length 25m
Chart Feeding Speed	15, 30, 45, 60, 90, 120, 240, 360mm/min.
Transducer Frequency	200KHz ± 3KHz
Angle of Beam Spread of Transducer	Half value, full angle: approx. 6°
Adjustment for Angle	Automatic adjustment (manual adjustment also possible)
Sound Velocity Correction	By every 1-meter increment for the range 1300 – 1599m/sec.
Range of Draft Adjustment	0.0 – 9.9m
Items Printed on Recording Chart	Time, water depth, correction value for sound velocity, and recording scale
Output of Water Depth LED Display	RS-232C, 4800 baud rate, 8 bits, stop bit 2
Power Supply	DC12V (built-in battery or an external battery)
Power Consumption	12V, 0.65A
Operating Time	6 hours continuous
Dimensions (W X H X D)	391 X 257 X 147mm
Weight	7Kg (with built-in battery)
Accessories	Transducer, boardside fixture, battery charger, maker, 5 rolls of recording chart
Optional Item	Reflection plate for sound velocity correction

### Standard Accessories



- **Transducer**  
Tamaya's transducer consists of two bars which can be folded in half. It does not take up space, and it can be easily stowed in a car.



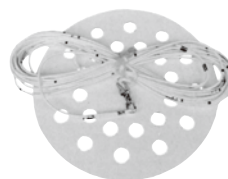
- **Boardside Fixture**  
Tamaya's boardside fixture is designed to fit on boardsides of most small ships. It can easily be mounted with two bolts.

- **Battery Charger**



Works with Most Softwares for Depth Survey

### Optional Item



- **Reflection Plate for Sound Velocity Correction**  
Tamaya's reflection plate is used when calculating sound velocity correction value by the bar check method.